

MXFLEX 60Wp

60Wp FLEXible Monocrystalline PV-Module

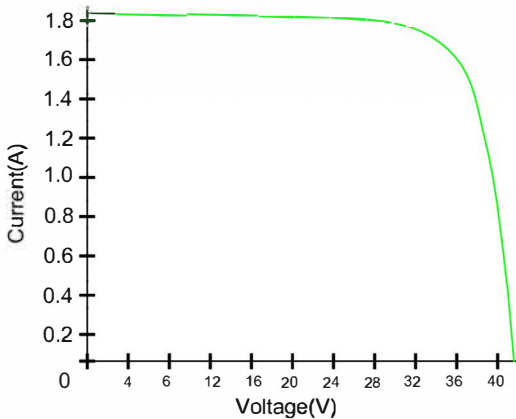
ELECTRICAL CHARACTERISTICS

Characteristics		Value
Max Power	Pmax	60W
Max Power Voltage	Vmp	30.0V
Max Power Current	Imp	2.0A
Open Circuit Voltage	Voc	36.7V
Short Circuit Voltage	Isc	2.10A
Maximul System Voltage		1000V
Series Fuse Rating		10A
Cell Efficiency		19.6%
Number of Cells in Series		64 Cells
Max Power Tolerance		+5%

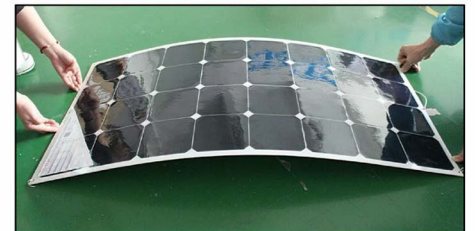
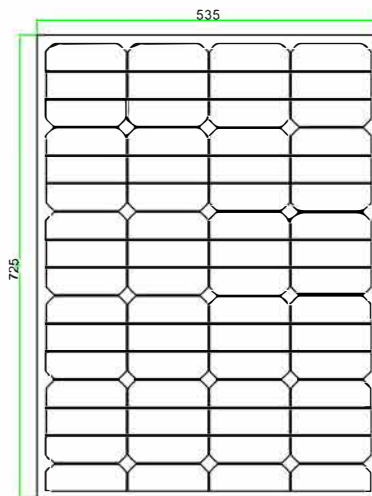
Temperature Co-efficients		Value
Power		-0,38%/°C
Voltage		-60.8mV/°C
Current		2.23mA/°C

MECHANICAL CHARACTERISTICS

Characteristics	Value
Weight	1.23Kg
Dimension	820 x 410 x 2.5 mm



Note: All electrical parameters are rated at standard test conditions (irradiance of 1000W/m², AM 1.5G, cell temperature 77°F/25°C)



Maximum recommended bending degree: 30 degree