

Solar charge controller

NEW LandStar series



New LandStar series is Epsolar's new generation programmable solar charge controller. All the models adopt aluminum heat sink which enables the reliability in high temperature environments. RS-485 connects to a remote meter or PC for real-time monitoring, custom setting and control etc.



Application:

- ◆ Solar home system
- ◆ Solar lighting system
- ◆ Solar road signals
- ◆ Solar surveillance
- ◆ Solar RVs and boats
- ◆ Small solar power station

Model overview:

LS1024B

LS2024B

LS3024B

10A/20A/30A

12/24V

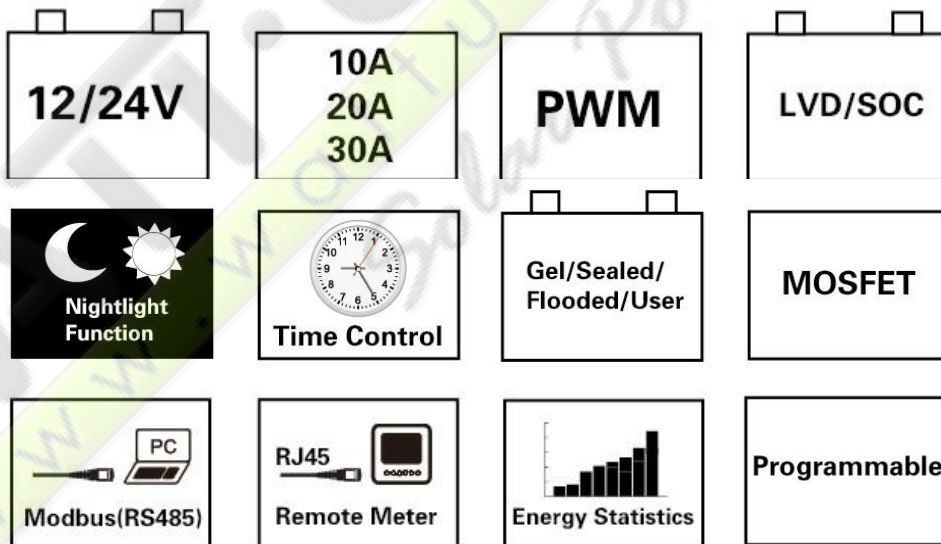


Features:

- ◆ Three system voltage configuration : 12V, 24V or 12V/24V auto work
- ◆ High efficiency PWM charging with temperature compensation
- ◆ 3 LEDs shows PV charging, battery and load status
- ◆ External temperature sensor interface
- ◆ RS-485 bus communication
- ◆ Open standard Modbus communication protocol
- ◆ Software update function

More powerful function via MT50 or PC

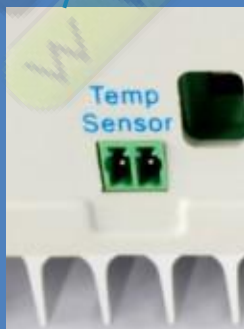
- ◆ Diversified load control modes : Manual, Light ON/OFF, Light ON+ Timer, Time Control
- ◆ Battery type selection: Gel, sealed, flooded and User type
- ◆ Real-time monitor
- ◆ Programmable parameters
- ◆ LVD or SOC load disconnect function
- ◆ Energy statistics function

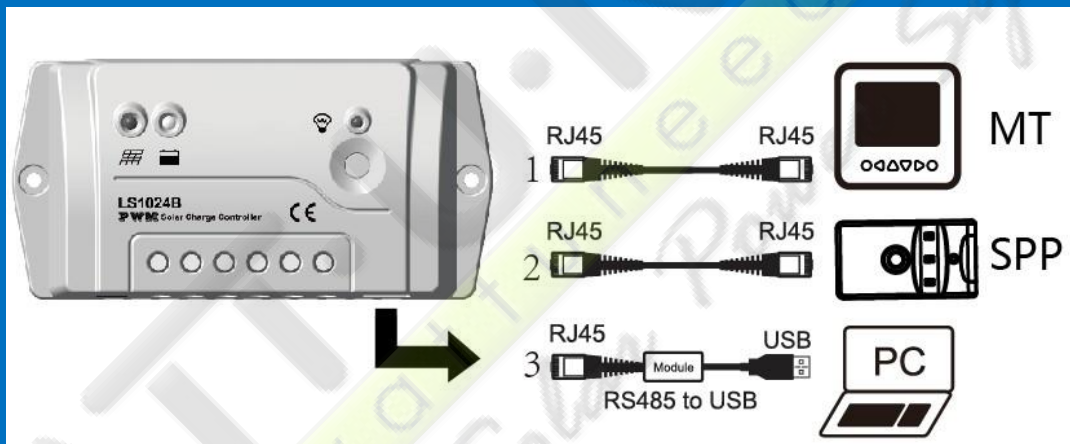
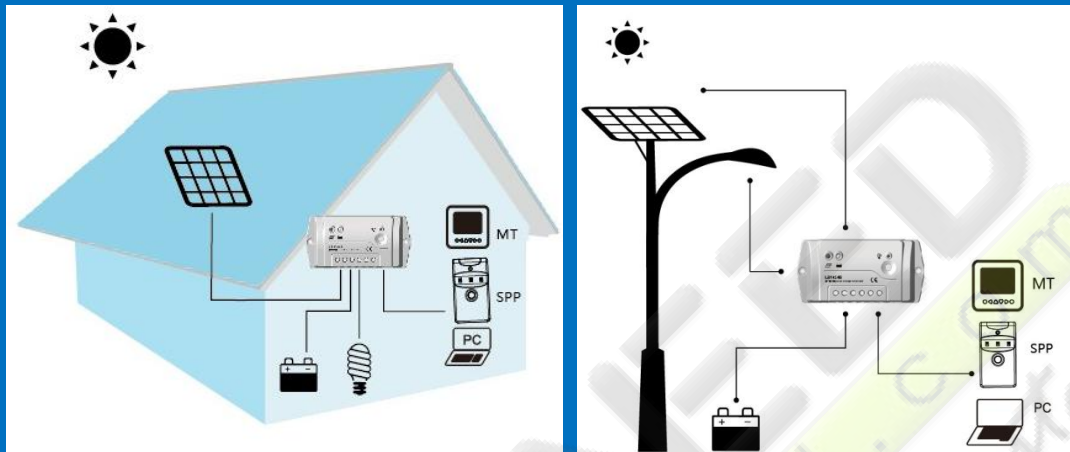


Electronic protections:

- | | | |
|--------------------------|-----------------------|----------------------------|
| ◆ PV array short circuit | ◆ PV reverse polarity | ◆ High voltage transients |
| ◆ Overcharge | ◆ Over discharge | ◆ Battery reverse polarity |
| ◆ Load short circuit | ◆ Load overload | ◆ Overheating |



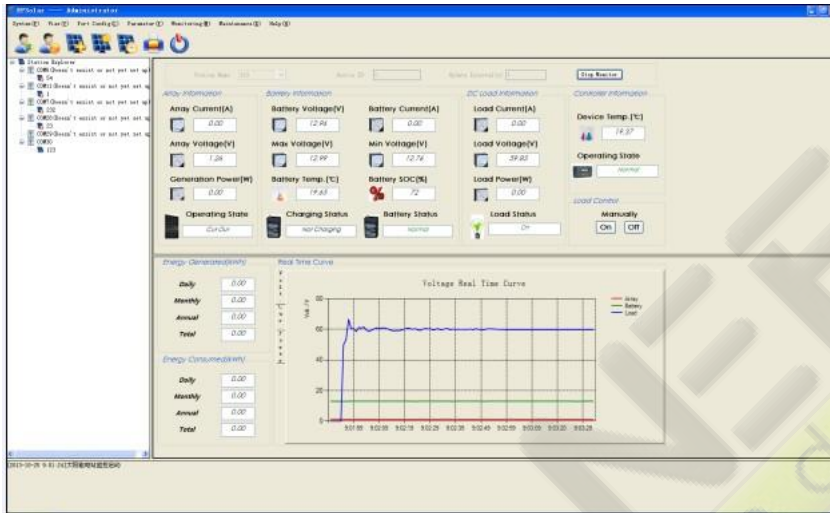




Optional accessories :

| | | | |
|------------------------------|--|--|--|
| | | | |
| <p>Remote meter MT50</p> | <p>Remote temperature sensor RTS300R47K3.81A</p> | <p>Communication cable CC-USB-RS485-150U</p> | <p>Super parameter programmer SPP-01</p> |

PC software:



Technical specifications :

| Model | LS1024B | LS2024B | LS3024B |
|--------------------------------|--|---------|---------|
| Nominal system voltage | 12 / 24VDC | | |
| Rated battery current | 10A | 20A | 30A |
| Maximum PV input voltage | 50V | | |
| Grounding | Common positive | | |
| Self-consumption | 8.4mA(12V), 7.8mA(24V) | | |
| Temp. compensation | -3mV/°C/2V (25°C ref) | | |
| Equalize charging voltage | Sealed: 14.6V, Flooded: 14.8V, User-defined: 9~17V | | |
| Boost charging voltage | Gel: 14.2V, Sealed: 14.6V, Flooded: 14.8V, User-defined: 9~17V | | |
| Float charging voltage | Gel /Sealed /Flooded: 13.8V, User-defined: 9~17V | | |
| Low voltage reconnect voltage | Gel /Sealed /Flooded: 12.6V, User-defined: 9~17V | | |
| Low voltage disconnect voltage | Gel /Sealed /Flooded: 11.1V, User-defined: 9~17V | | |

* Technical data for 12V system at 25°C



| Model | LS1024B | LS2024B | LS3024B |
|----------------|------------------|-------------------|-------------------|
| Dimension | 138.6x69.3x37mm | 159.6x81.4x47.8mm | 200.6x101.3x57mm |
| Mounting holes | 126mm | 147x50mm | 190x70mm |
| Terminal | 4mm ² | 10mm ² | 10mm ² |
| Net weight | 0.13kg | 0.3kg | 0.5kg |

| Environmental Specification | |
|-----------------------------|-------------|
| Working temp. | -35°C~+55°C |
| Storage temp. | -35°C~+80°C |
| Humidity | ≤95% (NC) |
| Enclosure | IP30 |



BEIJING EPSOLAR TECHNOLOGY CO.,LTD.
 Add: BLDG #18, CO.PARK ,NO.8 HEYING ROAD ,
 CHANGPING DISTRICT, BEIJING, CHINA
 Tel: 010-82894962 / 82894112
 Fax: 010-82894882
 E-mail: info@epsolarpv.com
 Web: www.epsolarpv.com

